

Do you know where you can get life-saving information to protect yourself? Your family?



August 2008



THE NEXT 30 DAYS

Emergency and Community Health Outreach

News

ECHO continues to build its name as a trusted source of health and safety information for limited English Proficiency (LEP) populations among public health and emergency management officials, safety officers, non-profit service organizations and members of the diverse ethnic communities in Minnesota.

ECHO Events

Are You Ready? An Emergency Preparedness Conference for Healthcare System Partners

Thursday, August 7, 2008

St. Cloud Civic Center

10 South 4th Avenue, St. Cloud, MN 56301

7:45 a.m. to 4:30 p.m.

ECHO TV in Greater Minnesota

ECHO TV is now statewide. See the July ECHO television schedule below for dates and times in both the Twin Cities and in greater Minnesota. Click [here](#) for a map of the coverage areas. Click [here](#) for a list of statewide public television channels.

A Rise in TB Cases in Minnesota Prompts CDC Investigation

Click [here](#) to read the article by the Center for Disease Control.

Click [here](#) to view ECHO's resources tuberculosis.

View Important Instructions on the Switch to Digital TV

Important instructions on the mandatory switch from analog to digital television are available on ECHO's website. Click [here](#) for more information and links to posters in several languages. We encourage you to print out and share this information.

ECHO will Attend Summer Events

ECHO will be present in several ethnic festivals this summer including the Annual Latino Family Resource Fair on August 9th. To get a full schedule of ECHO's promotional events, click [here](#)!

If you would like ECHO to participate in any events this year including health fairs, community festivals and professional conferences, please e-mail us at info@echominnesota.org or call us at 651-789-4337.

ECHO Press and Meeting Minutes

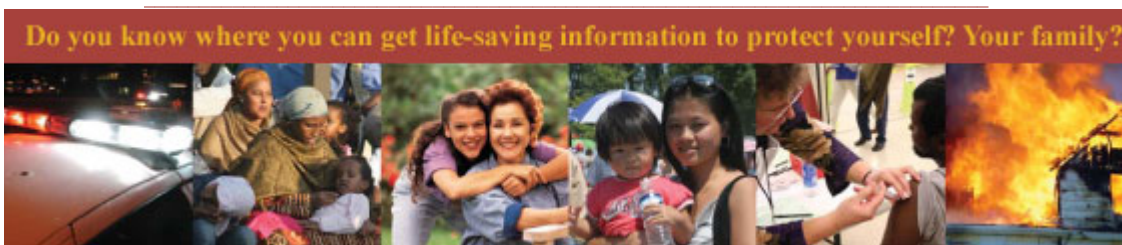
ECHO was featured in [an article](#) written by the Center for Infectious Disease Research and Policy.

Click [here](#) to view the ECHO article for August's Association of Minnesota Counties newsletter.

Click [here](#) for this month's ECHO meeting minutes.

*For more information about ECHO activities, contact Lillian McDonald, Executive Director
C/o Association of Minnesota Counties 125 Charles Avenue, Saint Paul, MN 55103 651-224-3344*

Please post the following bulletin on your community boards, waiting areas and other gathering places. Thank You!



August 2008



THE NEXT 30 DAYS

Emergency and Community Health Outreach

ECHO (Emergency and Community Health Outreach) exists to ensure that people with Limited English Proficiency (LEP) receive life saving health and safety information. ECHO's mission is to educate LEP populations on health and safety preparedness now, so that in a real crisis they are ready to act.



Twin Cities Metro Schedule:

“Special Education Help for Young Children”

Sunday, August 24: Spanish (8:00 pm), Hmong (8:20 pm) and Vietnamese (8:40)
Sunday, August 31: Vietnamese (8:00 pm), Lao (8:20 pm), Cambodian (8:40 pm)

“Get Fit, Eat Smart and Be Well”

Saturday, August 30: Vietnamese (11:00 pm), Lao (11:20 pm), Cambodian (11:40pm)

Greater Minnesota Schedule: [\(channel listings\)](#)

"First Aid and CPR"

Saturday, August 9: Spanish (11:00 pm), Hmong (11:20 pm) and Somali (11:40 pm)
Sunday, August 10: Spanish (5:00 am, 11:00 am, 5:00 pm), Hmong (5:20 am, 11:20 am, 5:20 pm) and Somali (5:40 am, 11:40 am, 5:20 pm)
Saturday, August 16: Vietnamese (11:00 pm), Lao (11:20 pm), Cambodian (11:20 pm)
Sunday, August 17: Vietnamese (5:00 am, 11:00 am, 5:00 pm), Lao (5:20 am, 11:20 am, and 11:20 pm), and Cambodian (5:40 pm, 11:40 am, 11:40 pm)

"Get Fit, Eat Smart, and Be Well"

Saturday, August 23: Spanish (11:00 pm), Hmong (11:20 pm) and Somali (11:40 pm)
Sunday, August 30: Spanish (11:00 pm), Hmong (11:20 pm) and Somali (11:40 pm)
Sunday, August 31: Spanish (5:00 am, 11:00 am, 5:00 pm), Hmong (5:20 am, 11:20 am, 5:20 pm), and Somali (5:40 am, 11:40 am, 5:40 pm)

"Seasonal and Pandemic Flu Differences"

Saturday, August 16: Spanish (11:00 pm), Hmong (11:20 pm) and Somali (11:40 pm)
Saturday, August 23: Spanish (11:00 pm), Hmong (11:20 pm) and Somali (11:40 pm)
Sunday, August 24: Spanish (5:00 am, 11:00 am, 5:00 pm), Hmong (5:20 am, 11:20 am, 5:40 pm), and Somali (5:40 am, 11:40 am, 5:40 pm)

"Mass Dispensing of Medicine"

Saturday, August 2: Vietnamese (11:00 pm), Lao (11:20 pm), and Cambodian (11:40 pm)
Sunday, August 3: Vietnamese (5:00 am, 11:00 am, 5:00 pm), Lao (5:20 am, 11:20 am and 5:20 pm), and Cambodian (5:40 am, 11:40 am, 5:40 pm)

All ECHO TV shows are broadcast on TPT-Channel 17 in the metro area. Check public TV and cable access TV listings for your area



Main Topic: “Back to School Immunizations” Seasonal Topic: "Avoid Being Hurt by a Tornado” and "Extreme Heat Safety."

Listen to ECHO phone by dialing toll free 1-888-883-8831. Information recorded in 10 languages including: Spanish (press #1), Hmong (press #2), Somali (press #3), Lao (press #4), Khmer (press #5), Vietnamese (press #6), Russian (press #7), Arabic (press #8), Oromo (press #9), and English (press #0).



- ECHO's TV Show listings for 2008 in English, Spanish, Somali, Hmong, Vietnamese, and Khmer can now be downloaded online! Visit ECHO web to find out how you can promote ECHO at your local events – and help us provide health and safety messages to Limited English proficiency populations [online](#) now.
- Download discussion guides produced by Steps to a Healthier MN and the Minnesota Diabetes Program for ECHO TV shows including:
 - "[Get Fit Eat Smart and Be Well](#)"
 - "[Asthma and Respiratory Diseases](#)"
 - "[Diabetes Prevention and Control](#)"



ECHO EVENTS

- ECHO will be present Saturday, August 9th, at the [Annual Latino Family Resource Fair](#) in August.

*For more information about ECHO activities, contact Lillian McDonald, Executive Director
C/o Association of Minnesota Counties 125 Charles Avenue, Saint Paul, MN 55103 651-224-3344
www.echominnesota.org and info@echominnesota.org*

Update your subscriptions, modify your password or e-mail address, or stop subscriptions at any time on your [User Profile Page](#). You will need to use your e-mail address to log in. If you have questions or problems with the subscription service, please contact support@govdelivery.com. All other inquiries can be directed to info@echominnesota.org.

This service is provided to you at no charge by Emergency & Community Health Outreach. Visit us on the web at <http://www.echominnesota.org/>.

GovDelivery, Inc. sending on behalf of Emergency & Community Health Outreach · 125 Charles Avenue · St. Paul, MN 55103 · 651-224-3344 or info@echominnesota.org